



)

4F-1, No. 236, Fude 2nd Rd., Xizhi Dist.,

New Taipei City 22151, Taiwan

886-2-6616-6692 tel.

886-2-2694-6875 fax

Upgrade Instruction

Old mainboard (5206e) upgrade to New mainboard (5272)

Spirit/Spirit LS/Spirit GLS/S290LS

Revision History :

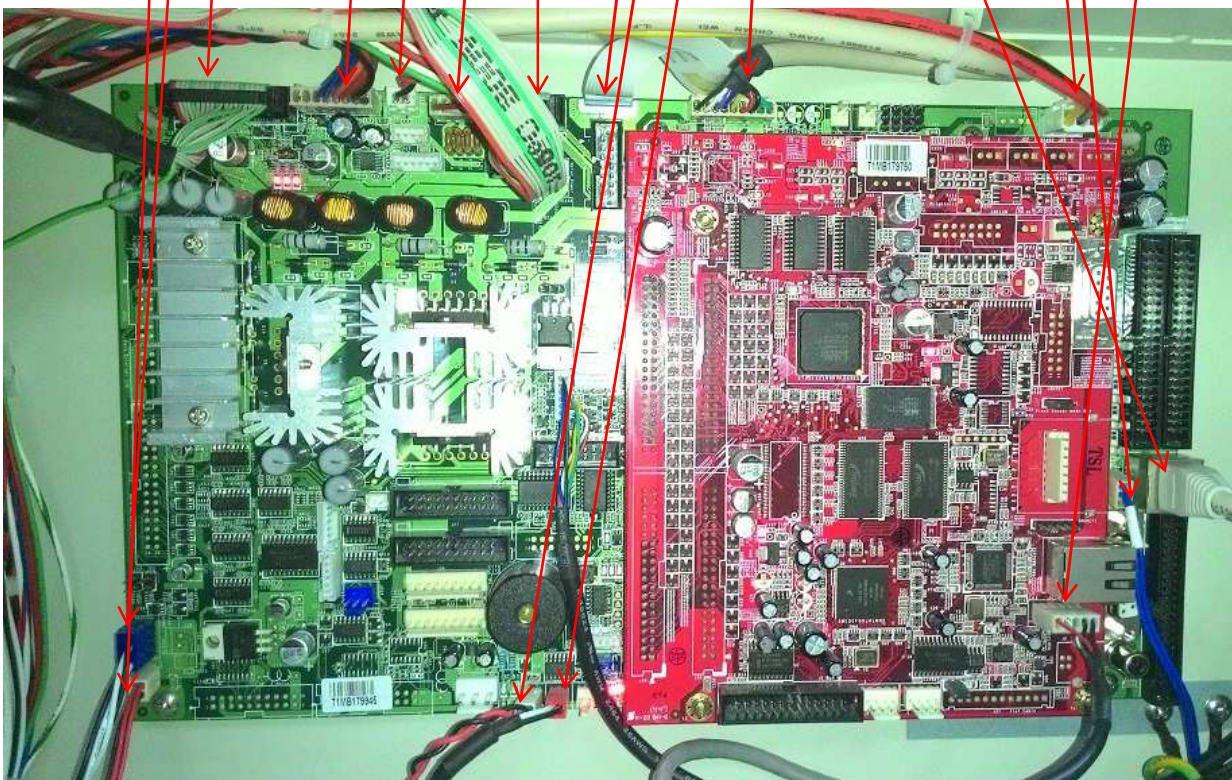
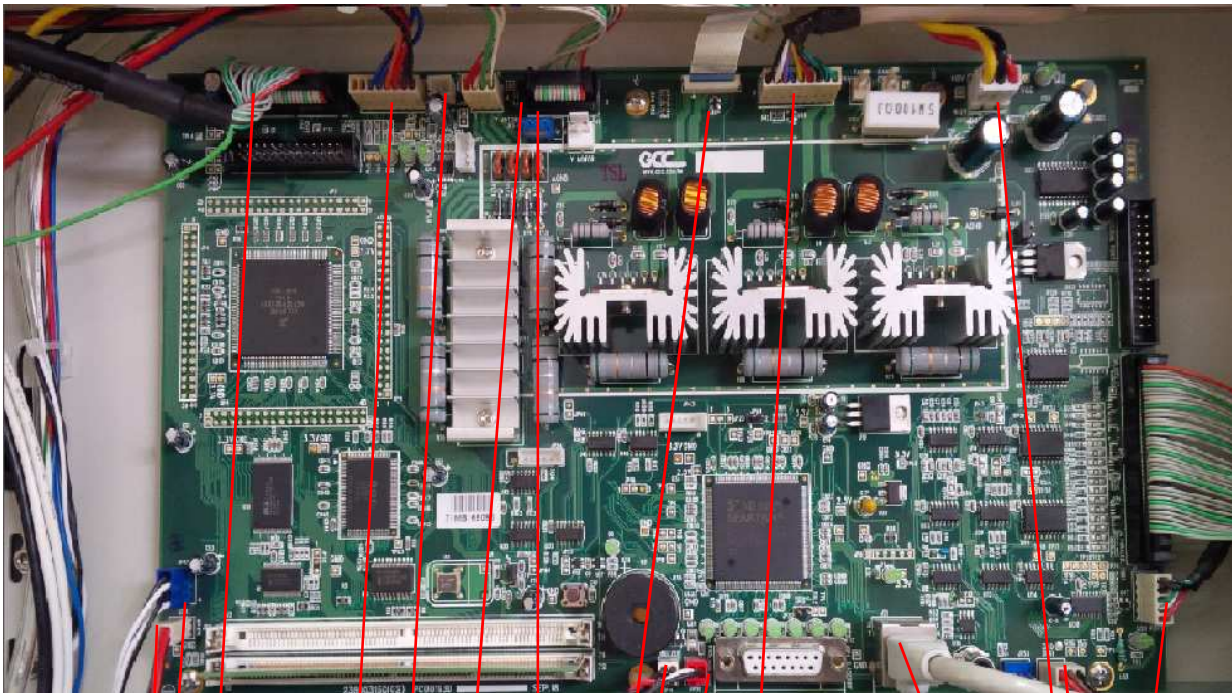
Version	Date	Page	Contents
1.0	Sept., 2015		First release

Upgrade Instruction

I. Mainboard

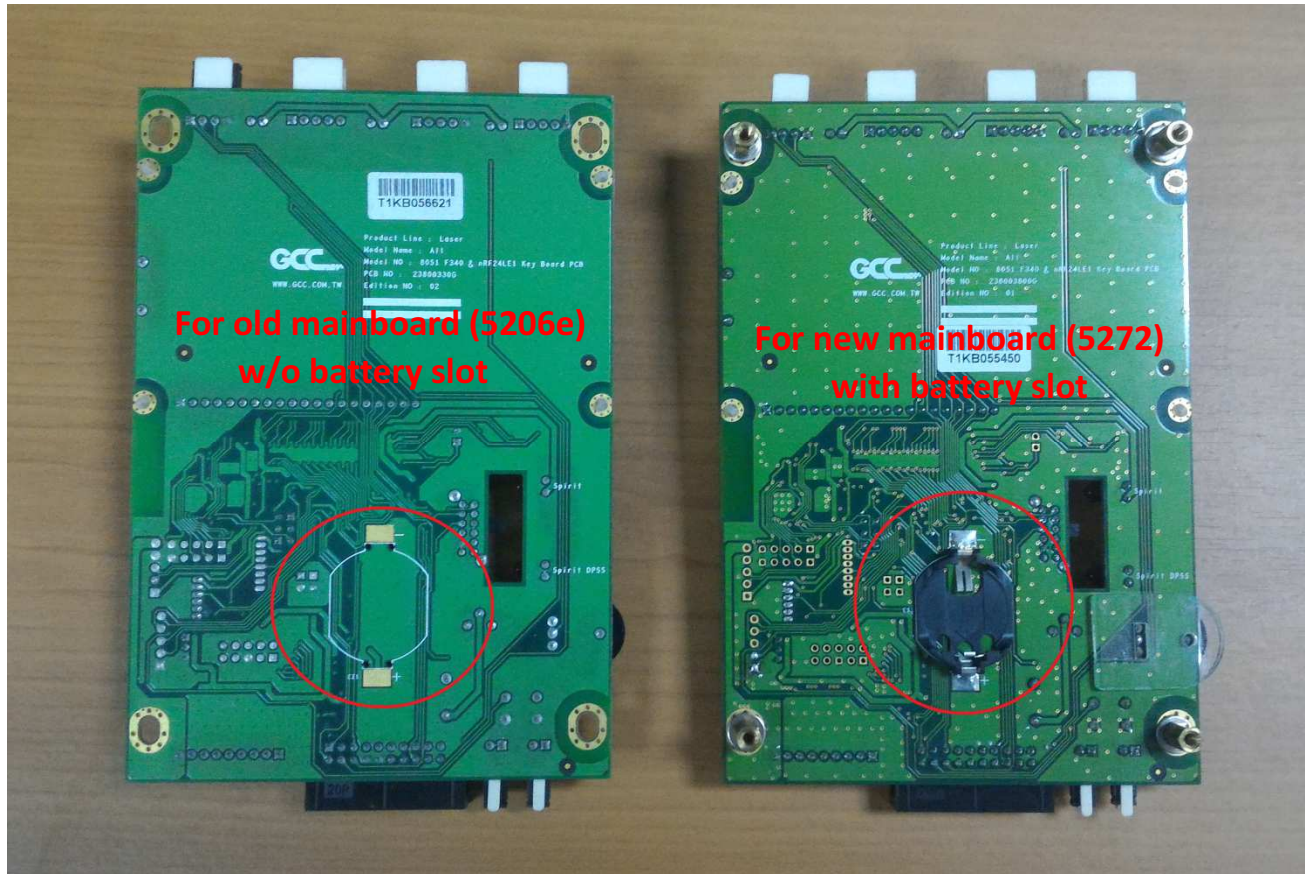
1. Old main board (5206e), it is green.
2. New main board(5272), it has two boards.
 - Main board is red.
 - Driver board is green.

Old M/B (5206e) pin	New M/B (5272) pin	Pin name
JCP1	Driver board JCP1 (N/A)	Parallel port (black)
JP34	Driver board JP5	3pin (white)
JS1	Driver board JS1	RJ45
JP25	Driver board JP25	Rotary motor
JP27	Driver board JP2	X-motor flat cable (white)
JP29	Driver board JP1	Y-motor (black)
JP37	Driver board JP10	Stepper motor 4pin (white)
JP31	Driver board JP3	Doors 6pin (white)
JP6	Main board J5	USB Port 5pin (white)
JP41	Driver board JP23	3pin (white)
JP53 (N/A)	(N/A)	3pin (blue)
JP39	Driver board (No number_under U34)	Laser diode 2pin (red)
JP14	Driver board (No number_under U34)	Buzzer 2pin (white)
JP33	Driver board JP26	4pin blue
JP11	Driver board JP25	SSR 2pin (white)

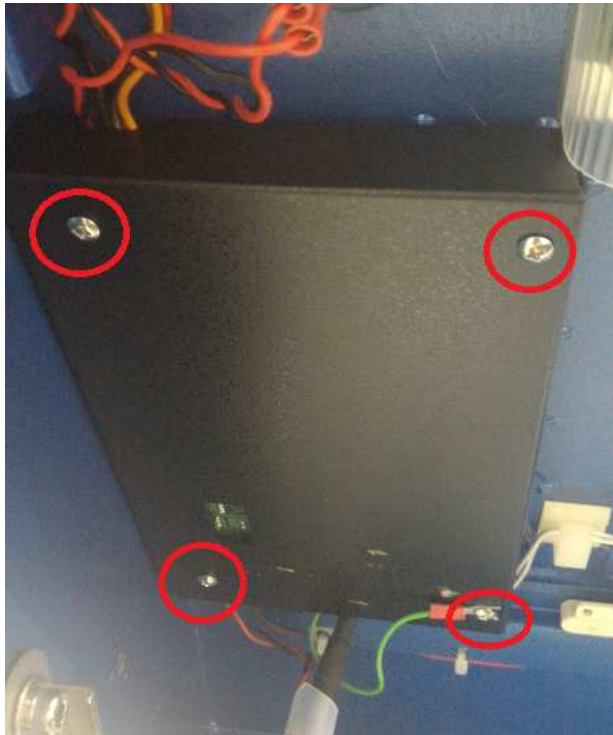


II. Control Panel

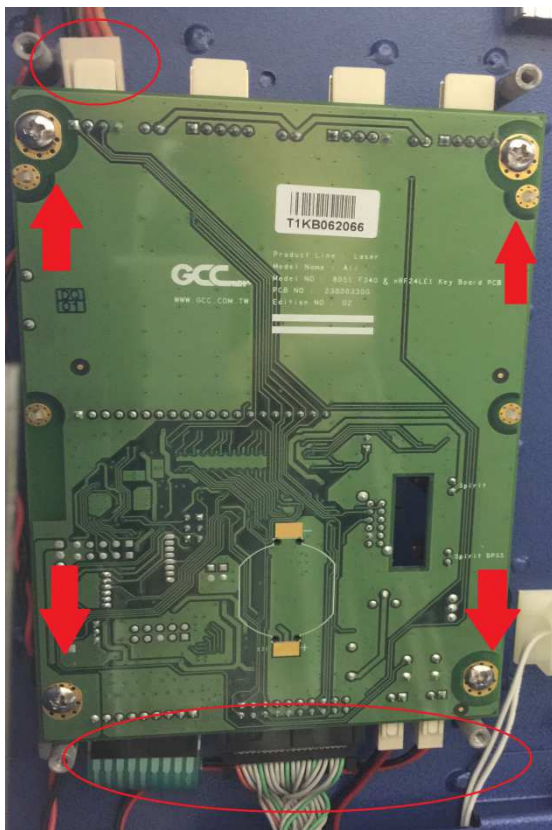
1. The control panel needs to be replaced as well, control panel for 5272 Mainboard is different from which used on 5206e, you can tell by the battery slot refer to below picture.



2. Loosen those four screws (see the red circles) of the cover which protect the control panel assembly.



3. Loosen those four screws (see the red arrow) which fix the control panel, and disconnect all the cables connected (see the red circles) refer to below picture.



4. Install the new control panel with all the cables connect in the same way as original, fix the protect cover.



jorlink  .com

Tel: (336) 288-1613 | eMail: sales@jorlink.com
support@jorlink.com